



## Akatarawa Forest Weekly Event Calendar Friday 14<sup>th</sup> August 2015

Date	Organisation	Contact	Vehicles	Activities	Areas to be used
1. Saturday 1 <sup>st</sup> August 2015 – Monday 31 <sup>st</sup> August 2015	ARAC	Marcus Steeneken	5 x 4WD	ARAC related activities	Valley View Rd, Clarkes Creek, Airstrip Dr, Woolshed Rd, McGhies Br, Deadwood Ridge, Titi Rd, Perhams Rd, Whakatikei Rd, Hydro Valley, Hydro Rd, Rimu Rd, Pram Track, ToiToi Rd, Clearys Rd, Puketiro Rd
2. Saturday 15 <sup>th</sup> August 2015 – Sunday 16 <sup>th</sup> August 2015	Kapi –Mana Motorcycle Club	Murray Dick		Set up	Cooks B forest, Dude Ranch
3. Saturday 15 <sup>th</sup> August 2015	CCVC	Frank Allan	20 x 4WD	Family Trip	Valley View Rd, Clarkes Creek, Airstrip Dr, Woolshed Rd, McGhies Br, Deadwood Ridge, Titi Rd, Perhams Rd, Whakatikei Rd, Hydro Valley, Hydro Rd, Rimu Rd, Pram Track, ToiToi Rd, Clearys Rd, Puketiro Rd
4. Monday 17 <sup>th</sup> August 2015 – Friday 21 <sup>st</sup> August 2015	Kapi –Mana Motorcycle Club	Murray Dick	6 x Motorcycles	Event Set up	Cooks B forest, Dude Ranch
5. Saturday 22 <sup>nd</sup> August 2015	Kapi –Mana Motorcycle Club	Murray Dick	40 x Motorcycles	Extreme Enduro	Cooks B forest, Dude Ranch

**Following the recent storm, extra caution is required when driving on all the forests roads. Hazards including fallen trees, washouts and slips are likely.**

**Note:**

**Slip on lower Hukinga Road, proceed with care.**

**Scouring and slip on Hydro Road above Wainui Stream, proceed with care.**

**Extra care needed when using all ford crossings.**

**Whakatikei causeway closed until further notice.**

**Wash outs on Whakatikei Road and Titi Road proceed pass with care.**

# Plantation Forestry

## Valley View Forest

- Logging has finished for the time being in the macrocarpa at Woolshed Road. Woolshed Road is now open for weekend public use. Machinery may still be working in this block during the week days.
- Logging has resumed in Lindsay's Block. Roding and skid site construction is also ongoing. No public access beyond Ragwort Hill please.

## Pakuratahi Forest

## Puketiro Forest

- Logging is currently confined to the Cooks Ridge area. No recreational access to this area please.
- Transpower is conducting maintenance on selected transmission towers and felling trees adjacent to the transmission lines over the next two weeks.
- The private owners of the forest block adjacent to Cleary's Road will be carrying out road maintenance and earthworks on their property over the next week.
- Motorcycle event in Puketiro Forest on the 22<sup>nd</sup> of August. No Entry to the forest this day please. Preparation will be carried out in Cooks B block Monday 17<sup>th</sup> to Friday the 21<sup>st</sup>.
- **Logging traffic along Puketiro, Rallywoods, Airstrip, Valley View, Lindsays and Ragworts roads between 4am and 5pm weekdays. Radio communication on these roads at all times.**
- **Following the recent storm, extra caution is required when driving on all the forests roads. Hazards including fallen trees, and debris, washouts and slips are likely. Drive to the conditions.**
- **The logging radio frequency will change on the 11<sup>th</sup> of May. The current frequency will not be usable in the forest from this date. Contact Richard Beamish-White (029 770 6223) or Chris Gibbons (027 478 8106) for more details.**

## Whakatikei Forest

- Goat cullers will be working in the native adjacent to Whakatikei Forest from the 18<sup>th</sup> to the 25<sup>th</sup> of August. Access is through the Van Crutchen property.

## Hukinga Forest

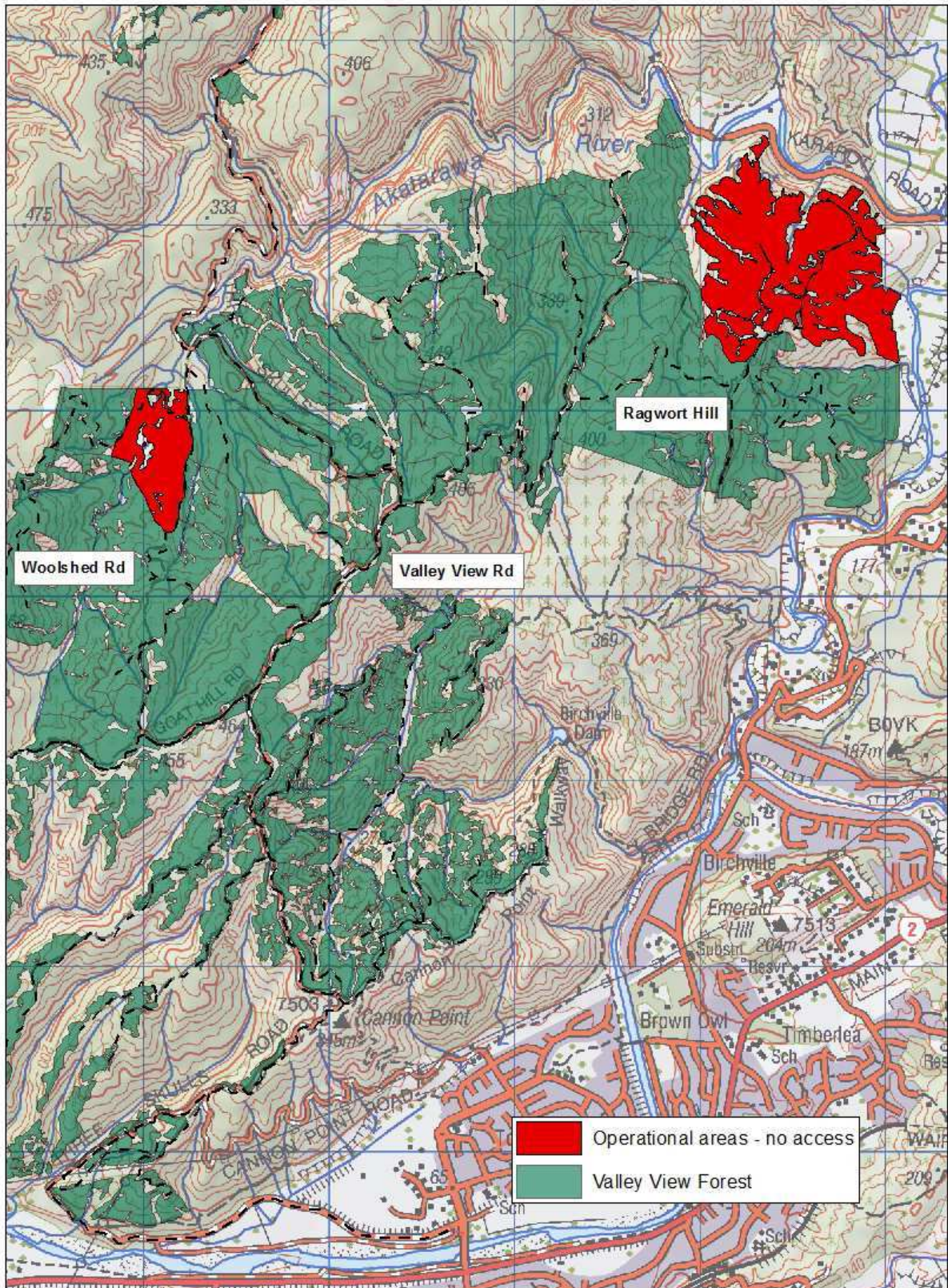
**The speed limit in the Forest is 30kph  
Please ensure that you obey this limit.  
Not all vehicles are equipped with radios –  
Drive to stop in half the clear distance ahead**

**BEWARE OF MOUNTAIN BIKES AND PEDESTRIANS ON & ADJACENT TO  
LOGGING ROADS**

**All vehicles MUST give way to loaded logging trucks**

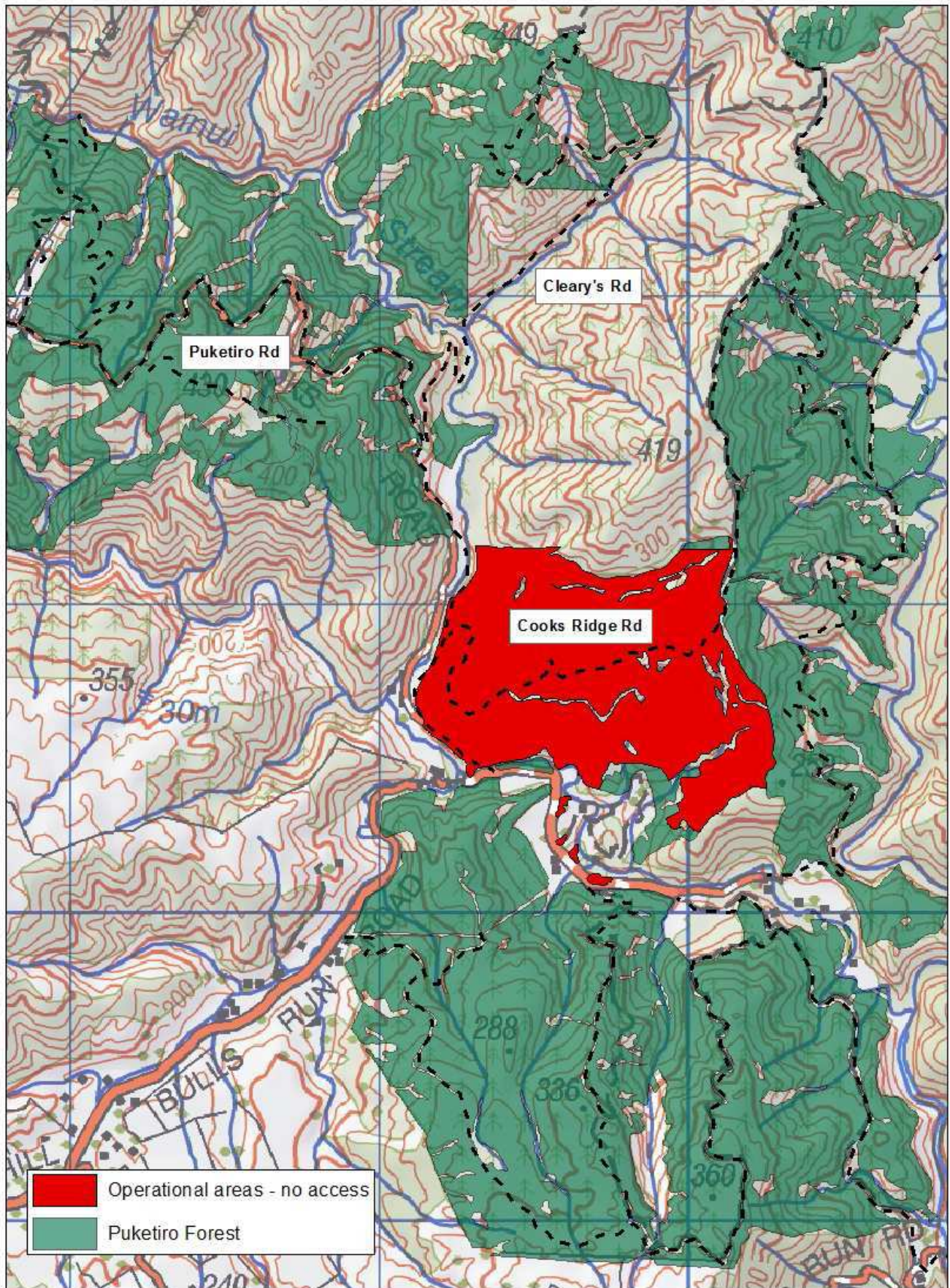


# Logging Crew Location Map



Valley View Forest





# Puketiro Forest

0 125 250 500 750 1,000 Meters



## Firewood Collection

**Firewood collection is closed  
Please see the Akatarawa forest for more  
Information.**

## Akatarawa Forest Block

- Greater Wellington Regional Council Rangers will be on Duty throughout the Forest
- Devil's Staircase route is **CLOSED to ALL motorised vehicles until Labour weekend due to maintenance and settling process for track surface.**
- Causeway Closed to vehicles due to wash out.
- From July 1<sup>st</sup> 2014 four wheel drive clubs access will only be for current approved ARAC certified trip leaders.
- Tobins Limited – Pylon maintenance (blasting and painting) will be carried out during the year (weather dependant) by Tobin's Ltd. Vehicles and crew will be entering and exiting Maungakotukutuku gate
- Electrix Limited – is working in conjunction with United Group on the Pylons off Hydro Road
- Transpower – Pylon maintenance on going may involve heavy machinery on Hydro Road.
- Police dog training school – will be ongoing on the roads within the Valley View area, Valley View Forest



## Pakuratahi Forest Weekly Event Calendar Friday 14<sup>th</sup> August 2015

Date	Organisation	Contact	Vehicles	Activities	Areas to be used
1.					

### Parks

- **Greater Wellington Regional Council Rangers will be on Duty throughout the Forest.**
- **Horse riding ongoing** – route through Maymorn, Tunnel Gully, Station Drive, Kaitoke Hill Track and Pylon Loop Track.
- **Police dog training school** – will be using the Maymorn forest for ongoing training entering and exiting via Gabities.
- **Deer Stalkers Rifle Range** – Associated clubs use Range most weekends.

**Wendy Flitcroft**  
 Receptionist /Team Administrator  
 04 526 4133